

# 450AJ SII Articulating Boom Lift



## APPLICATIONS

- Facilities maintenance
- Electricians
- Plumbers
- Maintenance and construction work
- Factory fit outs before electrical power is connected

Proportional controller for lift and lower and boom swing give smooth control

One handed operation for operator comfort and control. Proportional drive controller gives smooth control

Jib boom and basket rotate allows additional functionality and access to hard to reach positions

Articulated boom function provides increased outreach at height and allows fast operation from ground to full height using upper boom lift and main boom, telescope and jib

Load Sensing System

Low maintenance steel platform with non-skid mesh floor, and side entry gate. Enclosed foot switch

Cylinder boots protect cylinder shafts from debris and contaminants

Exhaust purifier allows work in ventilated indoor areas

Deutz D2011L03 Tier 4; (interim) diesel engine and transmission pump to match drive and function, power and performance requirements with a quieter engine and lower operating cost

Tie down and lifting lugs for ease of transport

Front axle oscillates when travelling with counterweight over steer tyres, assists in accessing difficult sites

Non-marking, urethane filled, puncture proof lug

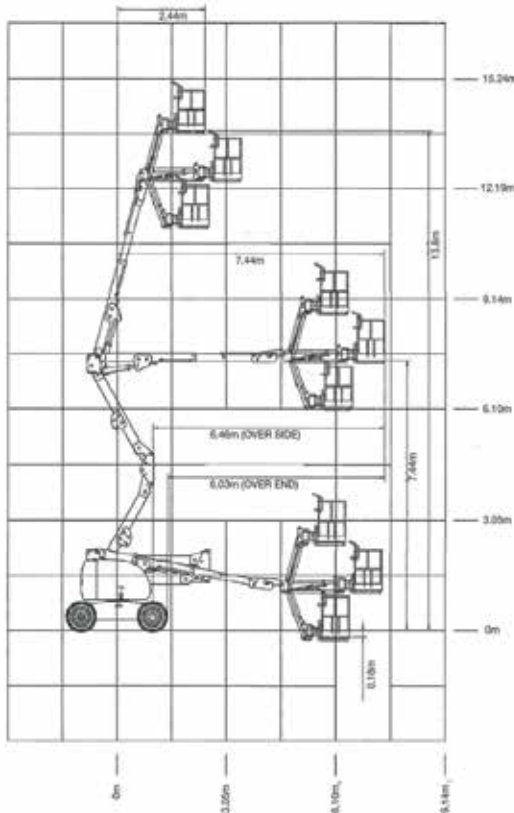
4 wheel drive with hydraulic piston 2 speed motors, gear reduction hubs and spring applied brakes for 4 wheel drive traction, provides maximum traction and ease of steering

## QUESTIONS TO ASK

- What are the ground conditions in the work area?
- What are the site conditions travelling around the site?
- What is the working height needed for the job?
- What is the up and over outreach required for the job?
- Do you need an extension lead outlet in the platform?
- Will an inbuilt Miller 5.5kVA generator make the job easier?

## KEY SELLING POINTS

- Smoother control, proportional hydraulic 4 wheel drive, with two speed ranges
- Proportional lift and swing controls at the platform
- Oscillating front steer axle with the boom within 10 degrees of centre, assists 4 wheel drive traction
- Tight steering turning circle
- No tail swing
- Jib boom and basket rotate
- Cylinder boots protect cylinder rods from overspray and contaminants
- Lug pattern urethane filled non-marking tyres
- Multi axis 4 degree level sensor
- Plug in JLG analyser at platform and base to indicate system functions for servicing and adjustment
- Deutz D2011L03 (36.4kW), reduces noise, vibration, emissions and runs at a slower speed to reduce fuel use



## SPECIFICATIONS

### Performance:

Platform Height (max.)	13.72m
Working Height	15.72m
Platform Rotation Angle	180°
Jib Raise Angle	74°
Jib Lower Angle	70°
Jib Articulation Range	144°
Maximum Horizontal Outreach	7.47m
Platform Capacity	230kg
Slewing Angle	360°
Continuous Slew	No

### Dimensions:

Stowed Length	6.71m
Stowed Height	2.29m
Overall Width	2.34m
Wheelbase	2.34m
Ground Clearance	0.29m
Platform Width	1.83m
Platform Length	0.76m
Overall Jib Length	1.24m
Tailswing	0m
Axle Oscillation	Std

### Power:

Power Source	Diesel
Engine Make	Deutz
Engine Model	D2011L03
Engine Power	36.4kW
Genset	5.5kVA Miller
Auxiliary Power	12V Pump

### Travel:

Tyre Size	12 x 16.5
Tyre Type	Urethane Filled, Non-Marking
Inside Turn Radius	2.00m
Outside Turn Radius	5.00m
Gradeability with 4WD	45%
Drive Speed - 4WD	7.2km/h
Maximum Ground Bearing Pressure	4.57kg/cm <sup>2</sup>

### Weights and Capabilities:

Fuel Tank Capacity	64.3 Ltr
Hydraulic Tank Capacity	102.2 Ltr
Operating Weight	6,220kg